

# Swiss Learning Health System's Final Event

Reflecting. Showcasing. Looking Ahead.

**9 May 2025**

Lucerne



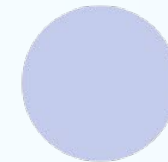


# Welcome to Neubad Lucerne!

Some organizational information:



# Welcome to the SLHS Final Event!



**Smarter  
Health Care**  
Forschung im Dialog mit Politik und Praxis



UNIVERSITY OF LUCERNE'S  
Competence Center for  
Learning Health Systems #CC\_LHS

# Agenda

Morning

9:30

## Welcome & Expert Keynote

Prof. Charles P. Friedman – Pioneer of Learning Health Systems

9:55

## Highlights of the SLHS

Engaging research, policy & practice: Key activities & achievements

10:25

## Coffee Break

10:45

## SLHS Live: Breaking News

Project insights presented in a dynamic news format

11:45

## Launch of Smarter Health Care

The next chapter in Swiss health services research

12:10

## Lunch



# Agenda

Afternoon

13:30

## Live Stakeholder Dialogue Experience I

Interactive simulation of policy dialogues

14:45

## Coffee Break

15:15

## Live Stakeholder Dialogue Experience II

15:45

## Health2040: The Future of Outpatient Care

Input presentations and Panel Discussion

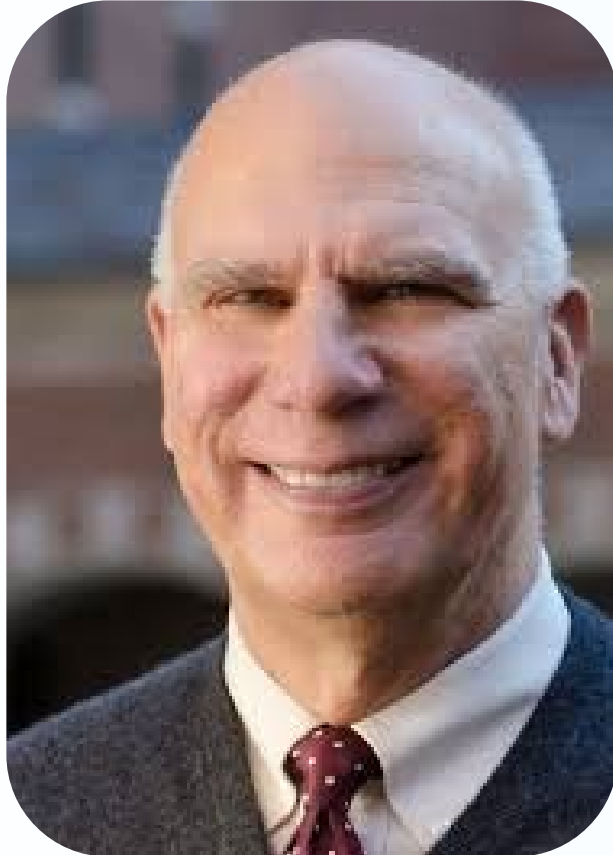
16:30

## Closing Reflections

16:45

## Apéro

# Keynote: Why Learning Health Systems Will Outperform Other Approaches to Improving Health



**Prof. Charles Friedman**

**University of Michigan**

Josiah Macy, Jr Professor of Medical Education

Professor of Learning Health Sciences, Medical School

Professor of Information, School of Information

Professor of Health Management and Policy, School of Public Health

# Why Learning Health Systems Will Outperform Other Approaches to Improving Health

Charles P. Friedman, PhD

Professor and Former Founding Chair  
Medical School Department of Learning Health  
Sciences

Professor of Information and Public Health  
University of Michigan

May 9, 2025

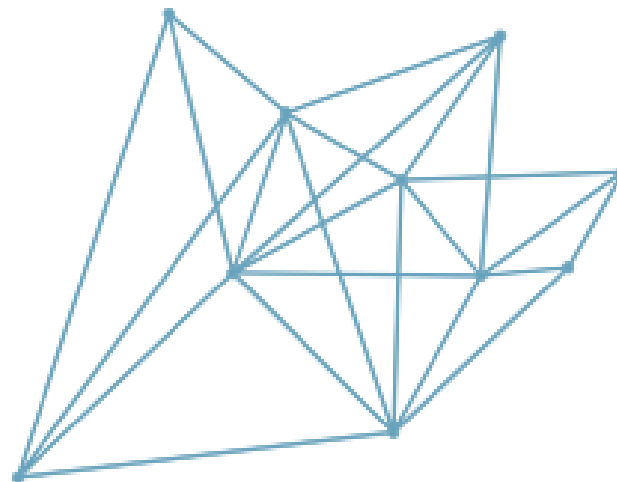


# Disclosure

I am Chair of the Board of Directors of the Learning Health Community, a non-profit corporation promoting Learning Health Systems.

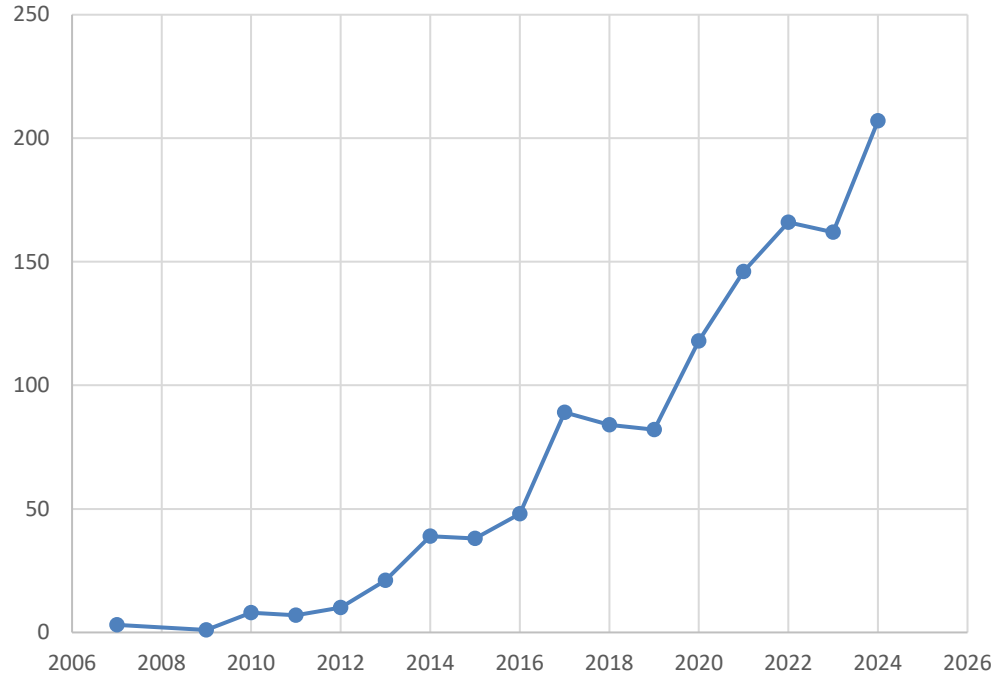
# Congratulations!

- To the Swiss Learning Health System
- The only broadly-scoped and nationally-scaled LHS in the world
- And best of luck for the next phase

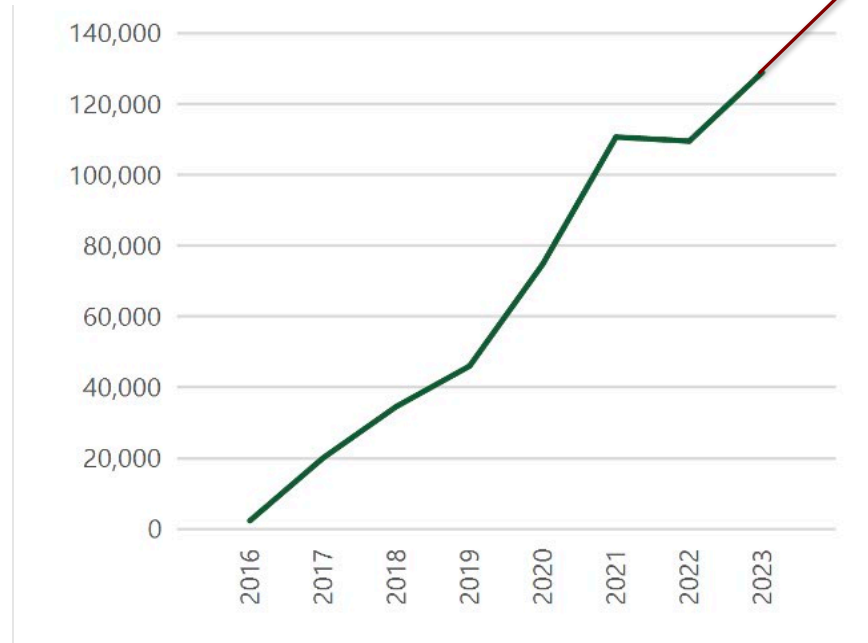


Swiss Learning  
Health System

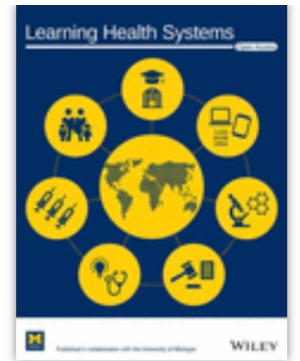
# The SLHS has been a Key Part of a Growing Global Movement



Pubmed Search:  
Title/Abstract: "Learning Health  
Systems" OR "Learning Healthcare  
Systems"



*Learning Health Systems*: Full-text  
Downloads



Note: 140/293 articles published in Learning Health Systems would not have been retrieved by this search.

# Leading to a Growing Realization...

Learning Health Systems Will Outperform Other  
Approaches to Improving Health

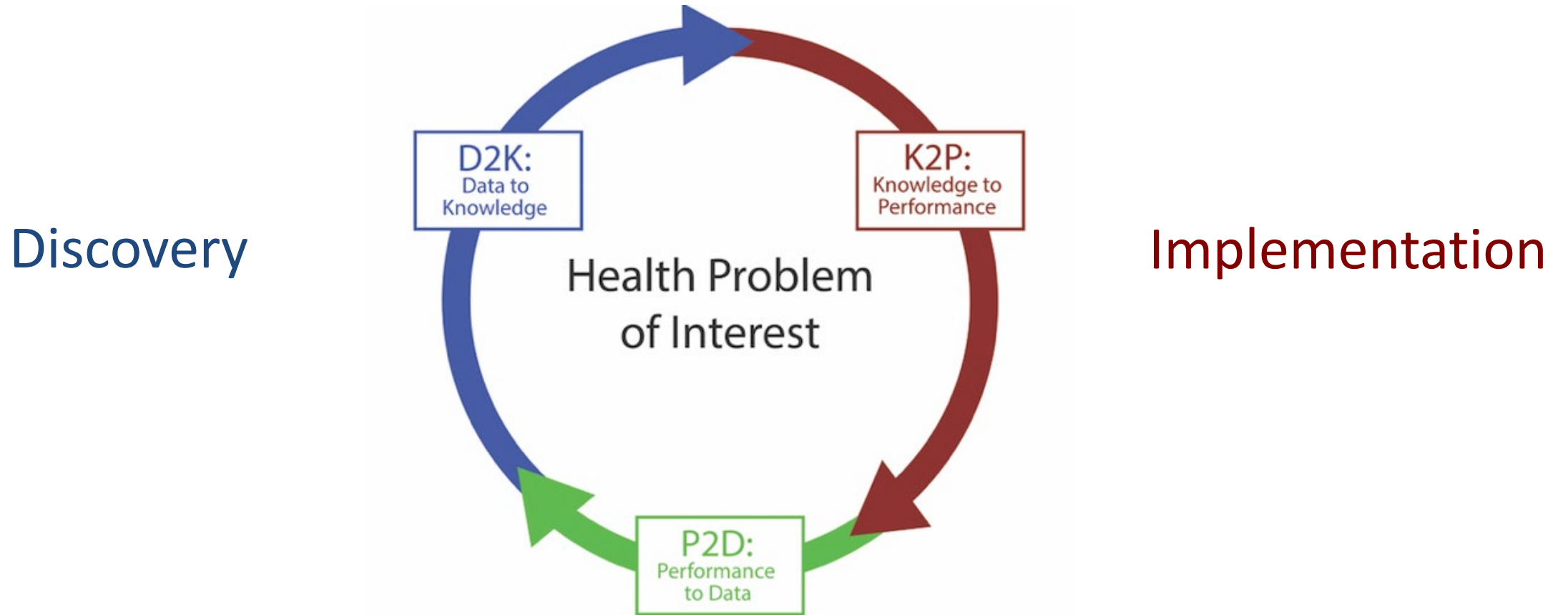
I'll give you many reasons why

# What are Learning Health Systems?

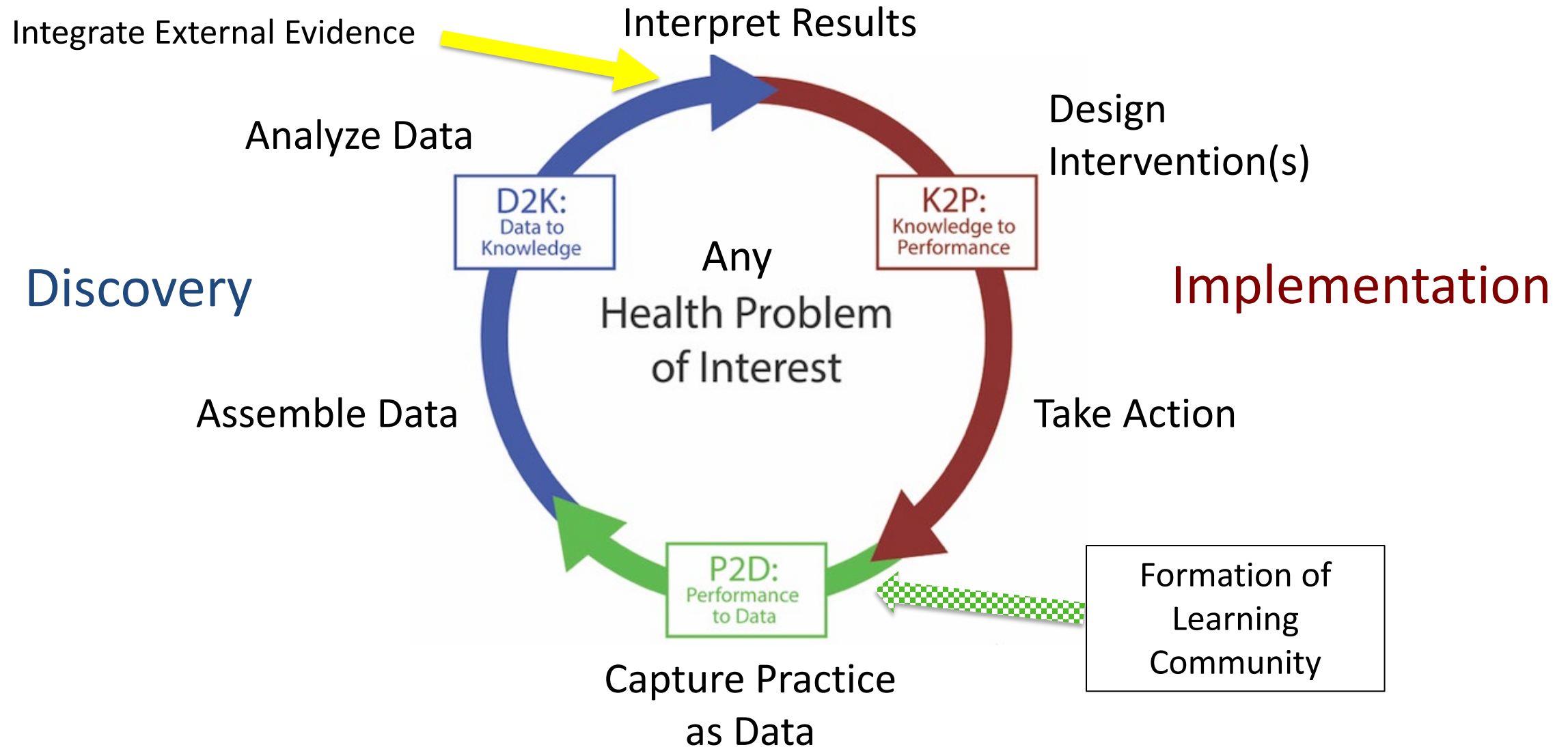
*Health systems--at any level of scale--become **learning systems** when they can, continuously and routinely, improve health by **marrying** discovery to implementation.*



# The Marriage “Ring” (The Improvement Cycle)

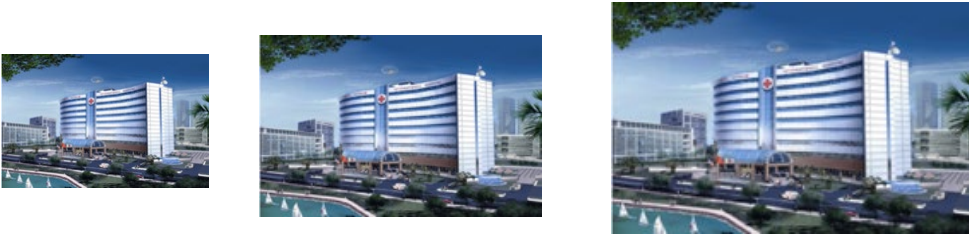


# The Fundamental Activity: Community-Directed Improvement Cycles



# Learning Systems Come in Many Shapes and Sizes

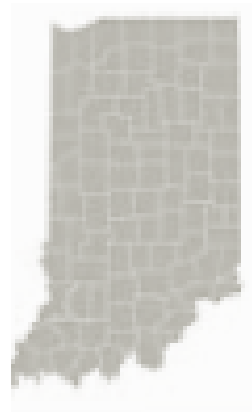
Single Organizations



Network of Organizations



States/Provinces/Regions



Nation

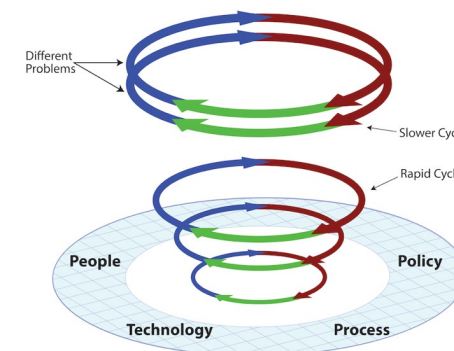
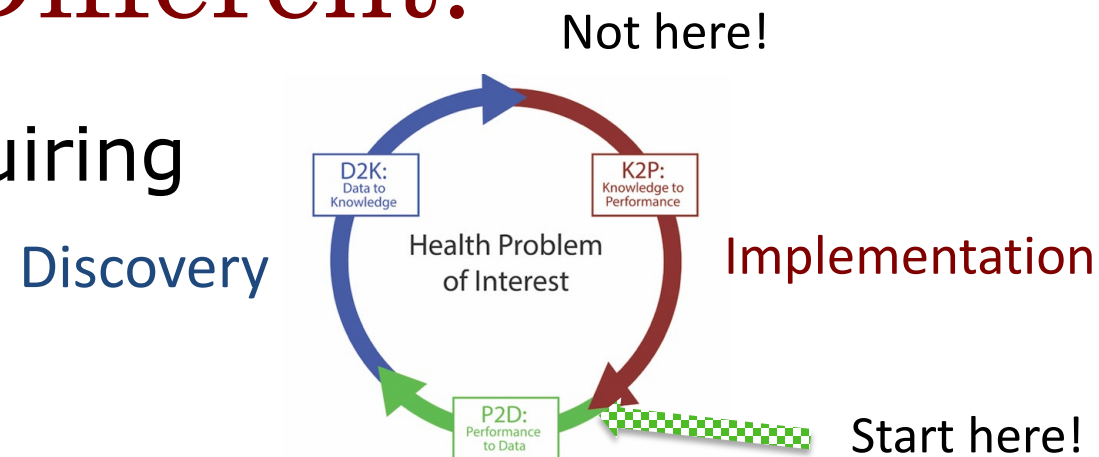


Planet

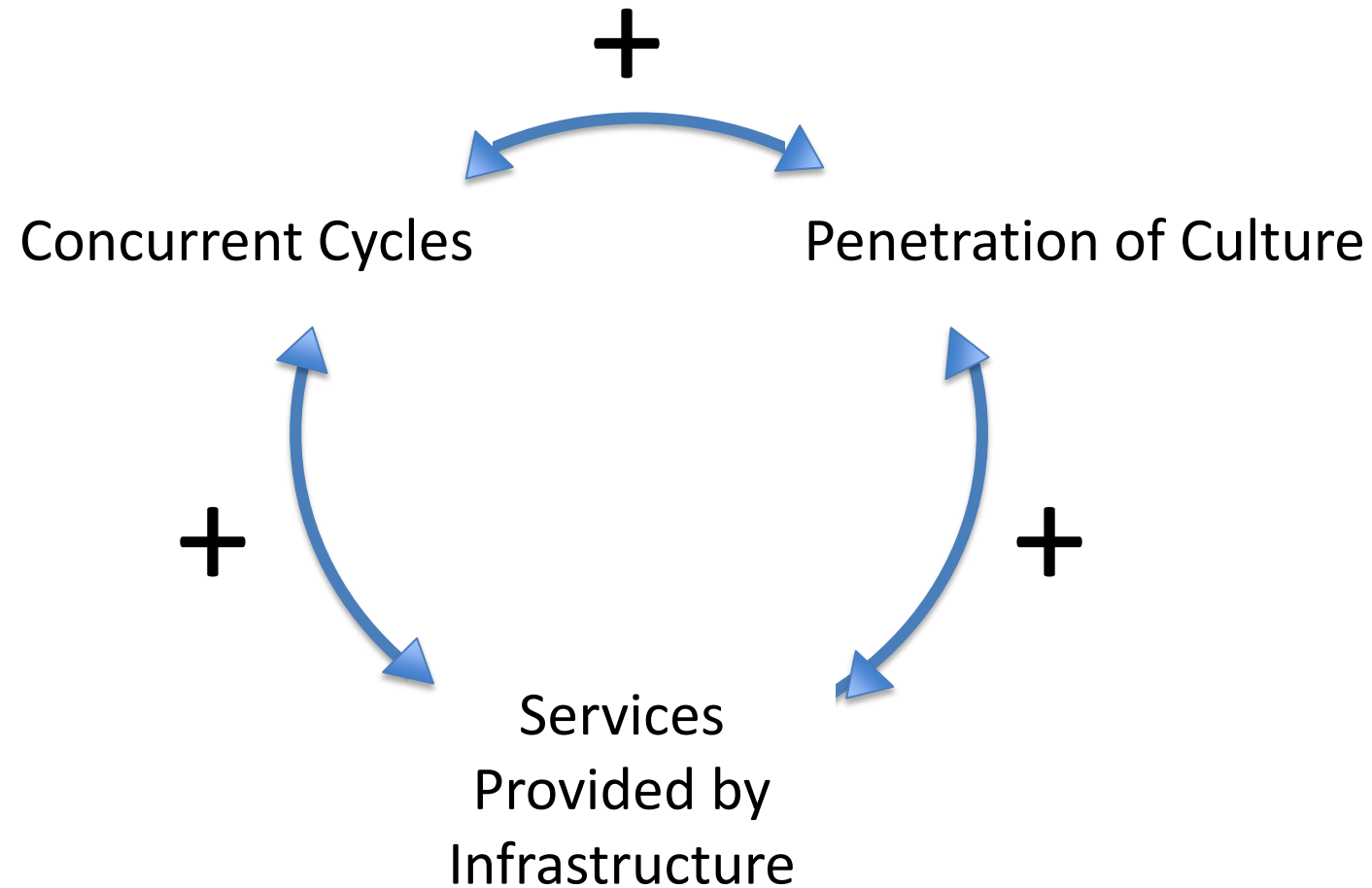


# LHSs are Different!

- Embraced uncertainty requiring **discovery**
- Multi-stakeholder learning communities enabling **continuity and inclusiveness**
- Infrastructure: shared services that create a **system**

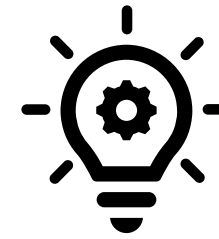


# The System Grows Organically



# Why LHS Can Outperform Other Improvement Approaches

- People are naturally drawn to ideas that reflect imagination and vision.
- Holistic focus on health, not just care
- It's a system served by infrastructure: resilient, adaptive and scalable
- It's an overhaul, not a cluster of patches



## Learning Health Systems

Open Access

COMMENTARY | [Open Access](#) | [CC](#) [i](#)

From Learning *Healthcare* Systems to Learning *Health* Systems

Aziz Sheikh [✉](#)

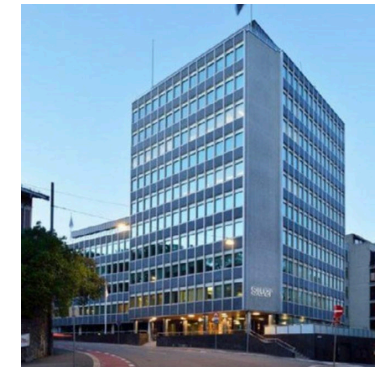
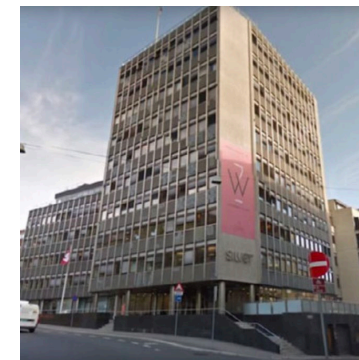
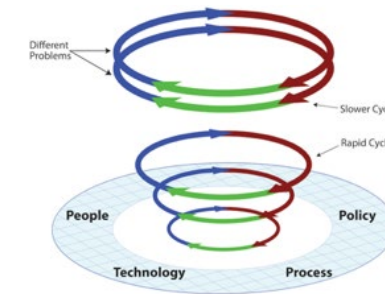


Photo credit: <https://www.researchgate.net/figure/The-Wergelandsveien-7-building-before-left-and-after-renovation>

# More Reasons...

- An LHS grows organically
- Diversity of approaches is a source of strength
- Improvement is co-created
- It's driven by by internal and external data and evidence

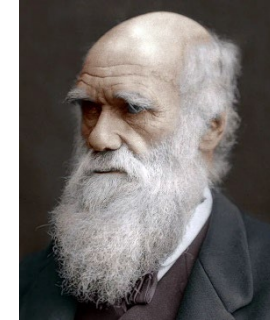
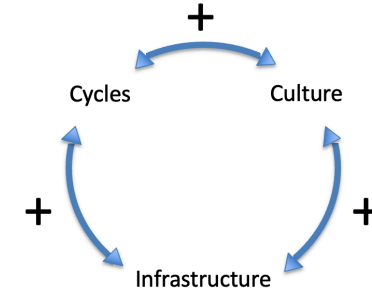
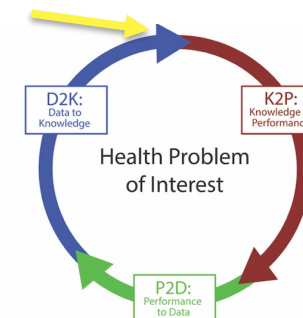


Photo credit:  
<https://www.pewresearch.org/science/2019/02/06/darwin-in-america-2/>

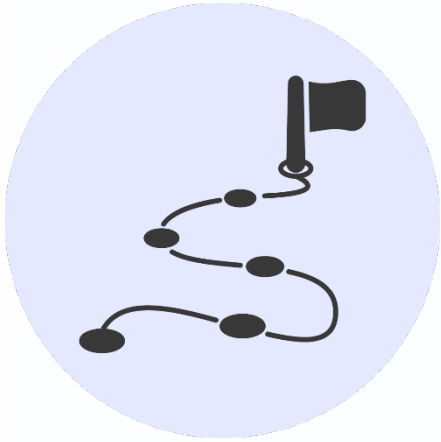


# In Closing

- As today's presentations unfold, I trust you'll see the presence of these key LHS features in the work that will be described.
- By the end of the day today, I hope you agree that:

Learning Health Systems Will Outperform Other  
Approaches to Improving Health





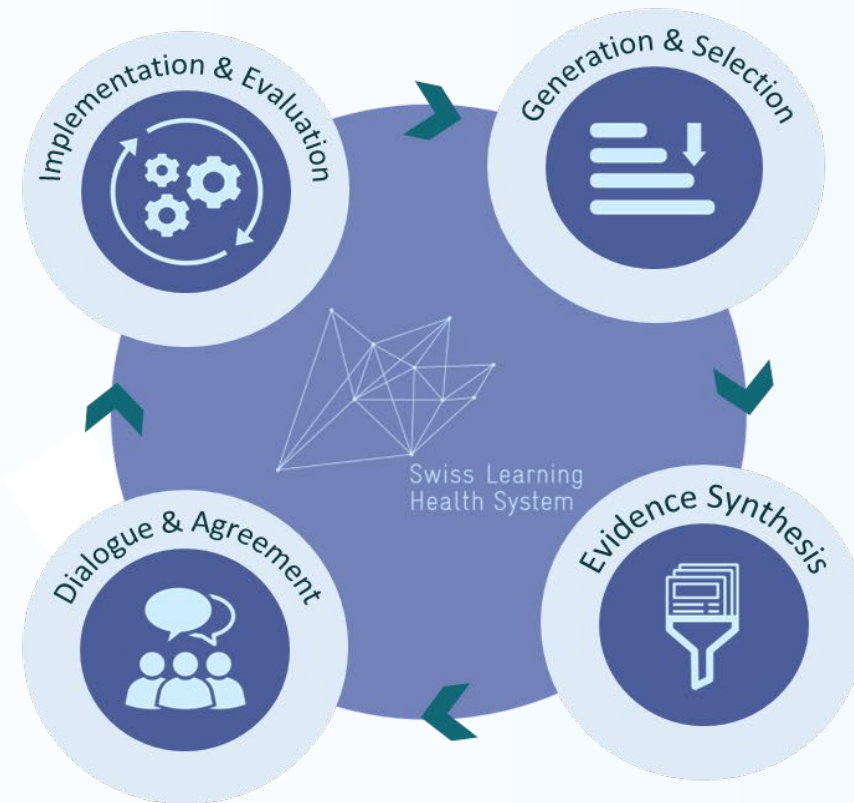
# The Swiss Learning Health System

## Key Activities & Milestones

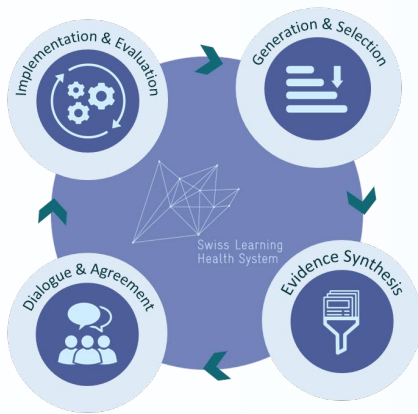
Sarah Mantwill, University of Lucerne



# Overview of SLHS Activities



# Overview of SLHS Activities



Started in **2017**

Funded by the State Secretariat for Education Research and Innovation (SERI)

1<sup>st</sup> funding period: 2017 – 2021

2<sup>nd</sup> funding period: 2021 – 2025

Funding: Two PhD cohorts for Learning Health System-related activities

# Overview of SLHS Activities

## The SLHS-Network

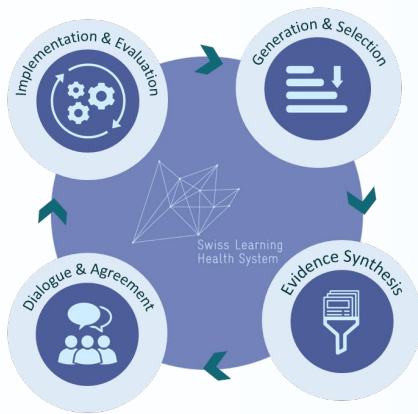
## 11 Partner Universities

## Governing Board: 33 Academic Professionals

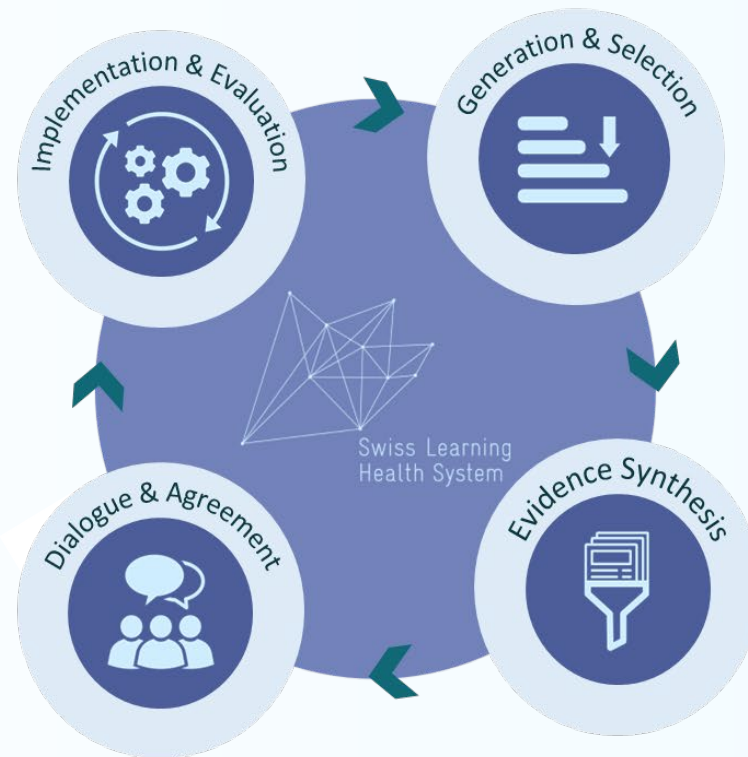
## SLHS-SSPH+ Cohort: 33 Doctoral Researchers

Health System Advisory Board:  
11 Representatives from Policy and Practice

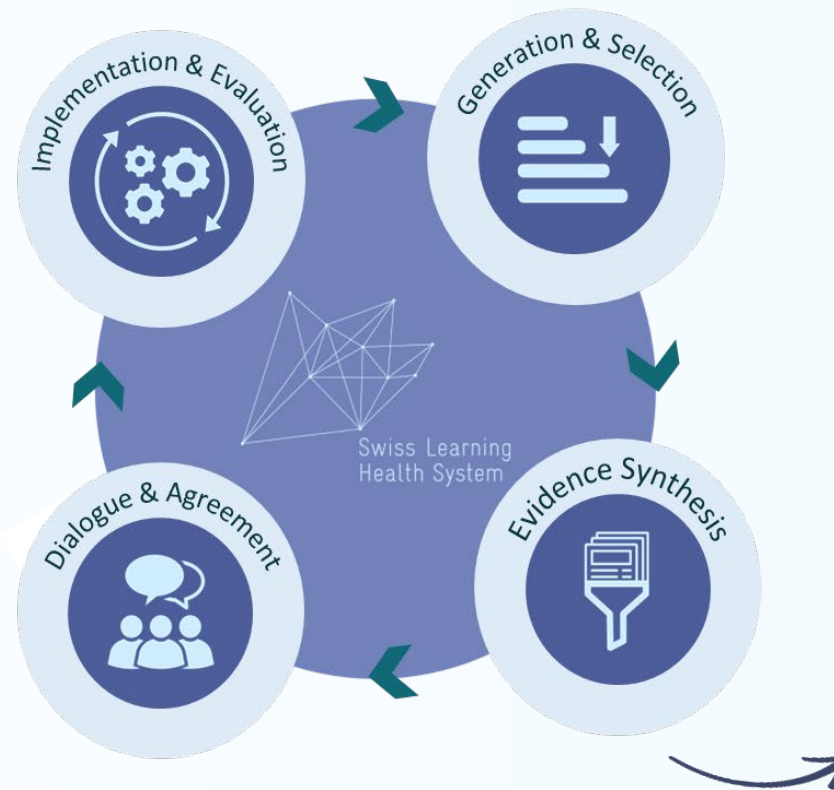
## International Partners



# Overview of SLHS Activities



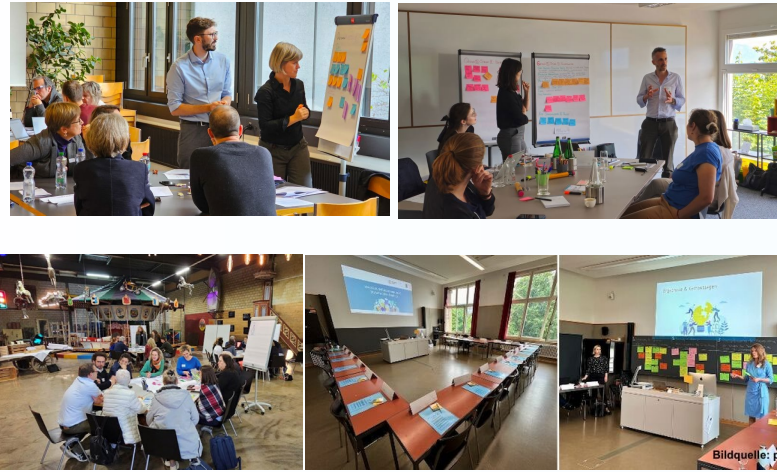
# Overview of SLHS Activities



## Policy Briefs

The SLHS produces evidence syntheses (Policy Briefs) as input for stakeholder dialogues.

# Overview of SLHS Activities



## Dialogue formats

Stakeholders work and discuss issues together to develop solutions and recommendations to address problems in the Swiss health system.



# Overview of SLHS Activities

## Improving Working Conditions in Swiss Nursing Homes

A Guide for Nursing Home Leadership



How can we improve the use of clinical guidelines in Swiss primary care?

We brought stakeholders together to find practical answers.



**GuidelineGPT** – AI chatbot for easy access to guidelines  
Fast answers – Trusted sources – Point-of-care support

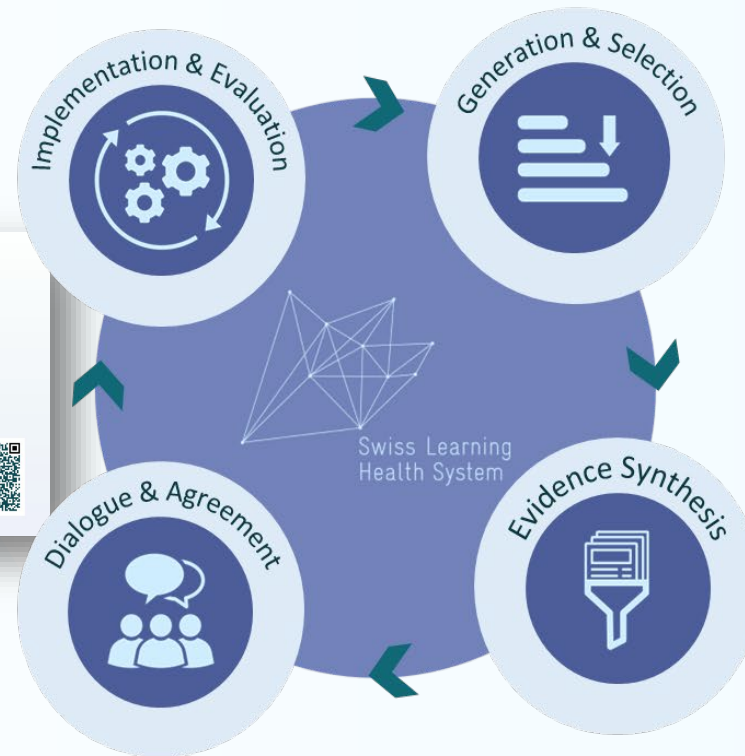


**SwissGPP** – Guideline promotion program via discussions in GP networks  
Peer exchange – Participation – Real-world relevance



**GLANCE** – National initiative to unify and simplify guidelines  
Unified – Co-created with doctors and patients – Digitally supported

Read the full Policy Brief  
For policymakers, practitioners, and researchers



Gesundheitsnetz für alle – pour tous –  
per tutti: Eine Vision für die Zukunft der  
Grundversorgung in der Schweiz

## Promoting the Sustainability of Suicide Prevention Projects in Switzerland

Sophia Werdin<sup>1,2</sup>, Eva Hollenstein<sup>1,2</sup> and Kaspar Wyss<sup>1,2</sup>

<sup>1</sup>Swiss Centre for International Health, Swiss Tropical and Public Health Institute, Allschwil, Switzerland; <sup>2</sup>Institute of Social Research, University of Basel, Switzerland

**Background:** Suicide prevention requires evidence-based measures, embedded in coordinated and sustainable efforts. This policy brief is the long-term integration of project-based suicide prevention initiatives into a system. We identify key facilitators and barriers to project sustainability and actionable recommendations for advancement.

**Analysis:** This policy brief integrates evidence from a narrative review with 36 suicide prevention experts, and ongoing evaluation research of projects to assess sustainability determinants and associated challenges. Sustainability includes evaluation gaps, insufficient collaboration, awareness, organizational challenges, and financial constraints.

**Policy Options:** To promote the sustainability of suicide prevention in Switzerland, we recommend: 1. Establishing a national suicide prevention resources and good practices; 2. Creating a guideline for multi-level stakeholder engagement; 3. Involving target groups in project design, evaluation; 4. Developing a sustainable financing plan early on.

**Conclusion:** Implementing these recommendations can enhance information, foster multi-level collaboration, raise awareness, and allocation, thereby strengthening suicide prevention in Switzerland.

**Keywords:** Switzerland, suicide prevention, program sustainability, intersectoral participation

## Quality of Cancer Care in Switzerland: Going Beyond Traditional Quality Indicators by Collecting Patient-Reported Experiences of Cancer Care

Chantal Ardi\* and Isabelle Peytremann-Bridevaux

Center for Primary Care and Public Health (EPiCare), Department of Epidemiology and Health Systems, University of Lausanne, Lausanne, Switzerland

**Background:** High-quality cancer care should be effective, safe, accessible, efficient, equitable, and responsive to patients' needs. In Switzerland, information on the safety and effectiveness of cancer care is available, but not on responsiveness. Systematic and comprehensive reports from patients on cancer care are missing and needed to complete the assessment of the quality of cancer care.

**Evidence:** Patient-reported experiences of cancer care are key to evaluate responsiveness of care and drive quality improvement initiatives in oncology practice. Studies have found that responsive care leads to more positive experiences of care, which can lead to more effective treatments and health benefits.

**Policy Options and Recommendations:** Our first recommendation is to develop a position statement on the importance and value of patient-reported experiences of cancer care. Our second recommendation is to systematically collect patients' experiences of



# At the heart of the project:

## The SLHS PhD students and the SLHS-SSPH+ Scholarship Program



# The SLHS-SSPH+ Scholarship Program

## Aims of the program:

To train young scientists to understand and conduct research at the interface between practice, policy, and research.



Doctoral students in the SLHS actively contribute to knowledge translation processes and are equipped with the skills to engage in and advance Learning Health Systems (LHS).

# The SLHS-SSPH+ Scholarship Program

## Components of the program:



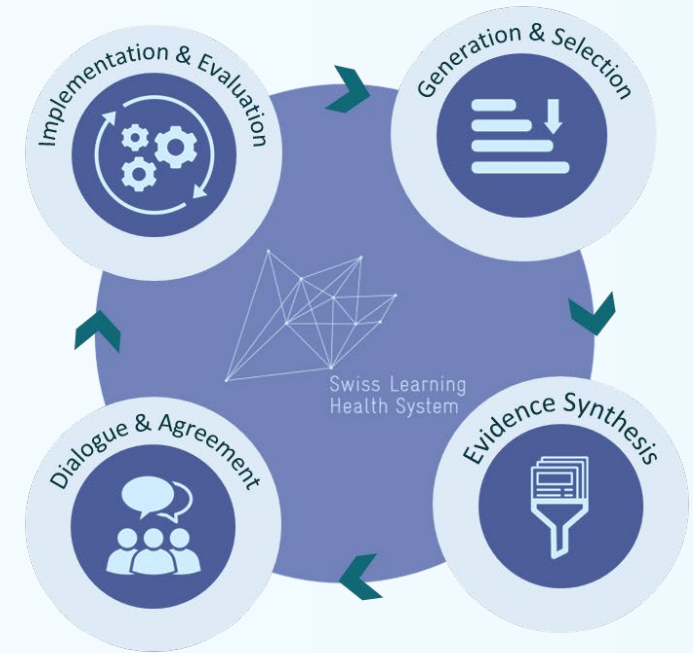
### **Develop a Policy Brief:**

Gain practical experience in synthesizing evidence for diverse audiences.



### **Conduct of Dialogue Formats:**

Engage with diverse actors to gain and develop actionable insights.





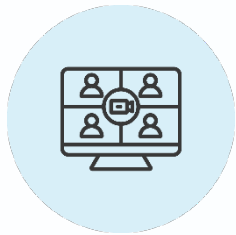
# The SLHS-SSPH+ Scholarship Program

## Components of the program:



### Elective Courses and Retreats

Range of courses focused on Learning Health Systems (LHS) and related topics.



### Webinars and Journal Clubs

Explore current issues in LHS and Knowledge Translation through interactive discussions.



### Informal Meetings with Policy-Makers and -Influencers

Build relationships and deepen understanding of the policy environment.

The Swiss Learning Health System's  
Journal Club

**"Positioning Patients to Partner:  
Exploring Ways to Better  
Integrate Patient Involvement in  
Learning Health Systems"**

Join us online!  
15:00 - 16:00  
25. April 2024

Speaker:  
Dr. Nakie Lee-Foon  
Health Equity Research Lead  
at the Institute for Better Health,  
Trillium Health Partners



The Swiss Learning Health System's Webinar Series

**Clear, Concise, Compelling:  
Mastering Science Communication**

Now on YouTube!

 Alexander Ort Science Communication: Functions, Roles and Trends	 Daniel Saraga Presenting Scientific Evidence to Politicians	 Vinzenz Greiner How to Communicate Research on Social Media Platforms	 Mirko Bischofberger Why & How to Communicate Science: a Practical Approach
---	---	---	---

**"Unraveling Complexity with  
Systems Thinking"**

Join us online!  
15:00 - 16:00  
16. October 2024

Speaker:  
Carmen Sant Fruchtmann  
Scientific Collaborator,  
Swiss TPH





# The Swiss Learning Health System

## Key Activities & Milestones

Policy Briefs & Stakeholder Dialogues:  
Customer-Producer Perspective

Cinzia Zeltner, Federal Office of Public Health  
Sophie Karoline Brandt, Bern University of Applied Sciences



# **The Swiss Learning Health System Key Indicators & Lessons Learned**

**Luca Crivelli, University of Applied Sciences and Arts of Southern Switzerland**  
**Natalie Messerli, University of Lucerne**



# The History

SHK | CSHE | CSSU | CSSA

Schweizerische Hochschulkonferenz  
Conférence suisse des hautes écoles  
Conferenza svizzera delle scuole universitarie  
Conferenza svizra da las scolas autas

221/15

Projektgebundene Beiträge 2017-2020 nach HFKG

Projektantrag

(einzureichen durch swissuniversities bis Ende Februar 2016)


**Projekttitel: *Swiss Learning Health System (SLHS)***  
***A national platform for health systems and services research, policy and practice***

## Higher Education Policy


Strategy and Planning

## Programmes and Projects

2017-2020

4	 <b>Swiss Learning Health System</b> (SLHS). A national platform for health systems and services research, policy and practice	Universität Luzern	4,400,000
---	--	--------------------	-----------

2021-2024

P-4	 <b>Swiss Learning Health System (SLHS)</b>	Universität Luzern	4'800'000
-----	--	--------------------	-----------

# The Swiss Learning Health System

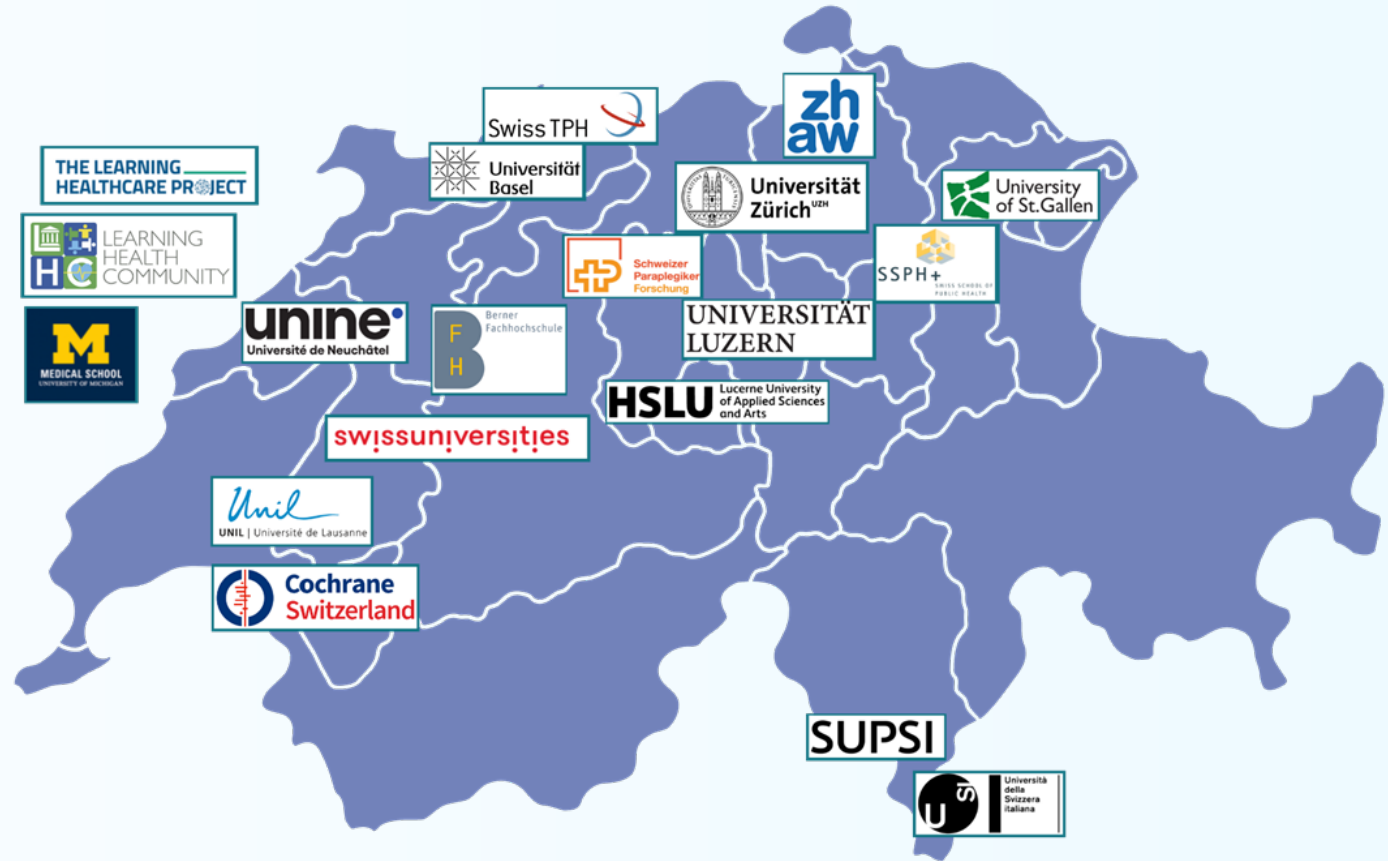
*Since 2017 to Present*

**Health System Advisory Board: 11**

Representatives from Policy and Practice

**Governing Board: 33 Academic Professionals**

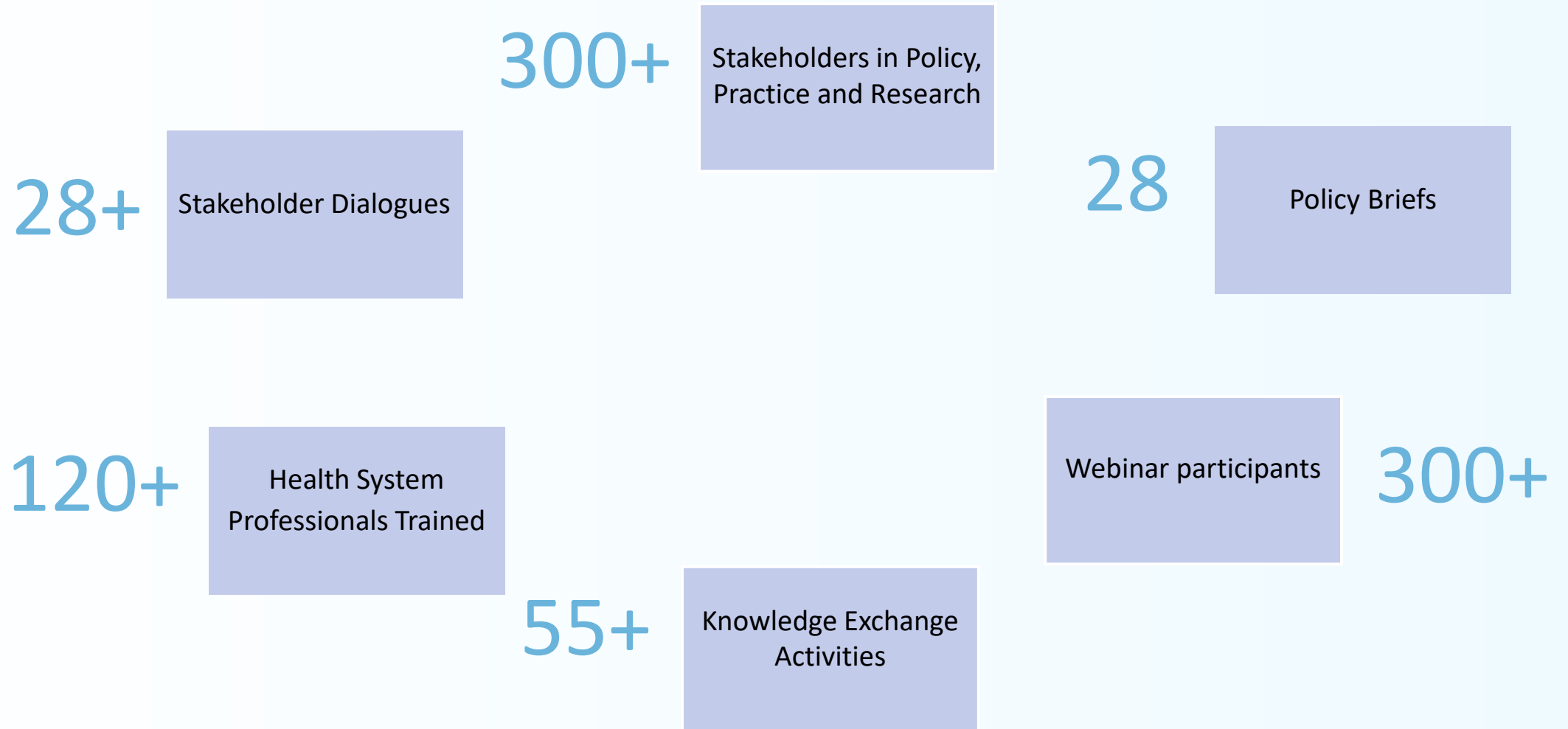
**SLHS-SSPH+ Cohort I&II: 31 Doctoral  
Researchers and 20 Alumni**



Funding provided by the State Secretariat for Education, Research and Innovation: Funding phase I from 2017 to 2021 and phase II from 2021 to 2024.



# So how did we do?



# Did Our Message Make It Out There?

60K+

Website views

3.9K+

File downloads

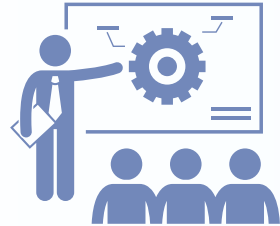
1.3K+

LinkedIn followers

900+

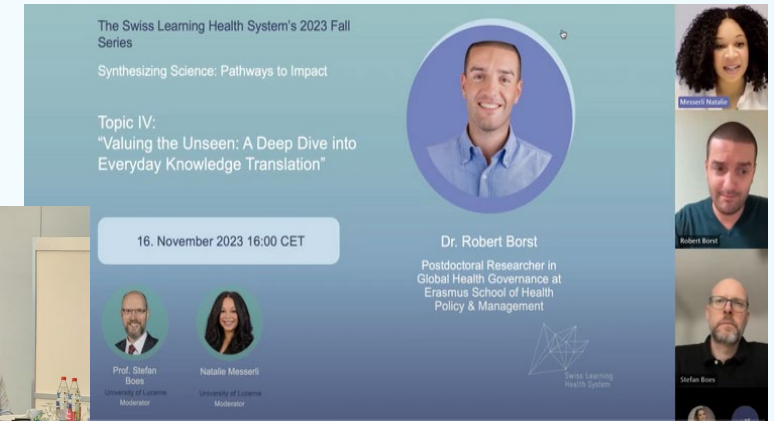
Yearly reactions to  
LinkedIn posts

# What were the key successes?



## Capacity Building

Prompted a cultural shift, training scientists to think early on across policy, practice, and science intersections, breaking silos, and fostering community building through participatory approaches.

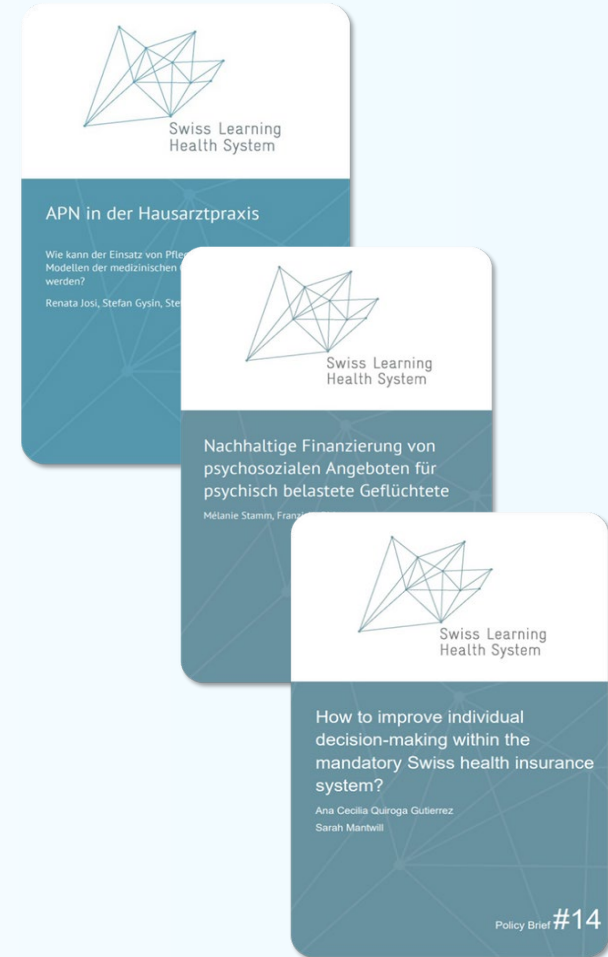


# What challenges did we face?



## Knowledge Adaptation & Transfer

Members of the SLHS experienced challenges with tailoring and transferring knowledge products like policy briefs to certain stakeholder groups. This led to many feeling uncertain about the influence on decision-making.

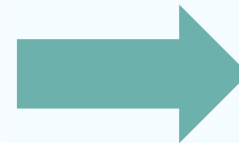


# What we learned?

## Routine Stakeholder Capacity Building and Dialogue



Infrequent engagement limits the impact and empowerment of stakeholders.



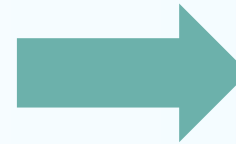
Establish ongoing dialogue and capacity-building initiatives, fostering continuous collaboration and shared learning.

# What we learned?

## Integrating Lived Experiences in Research Training



Research often overlooks the practical insights from community and health professionals.



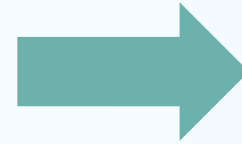
Incorporating lived experiences into training enhances the real-world impact and relevance of research.

# What we learned?

## Knowledge Translation: Tailored Activities and Practices

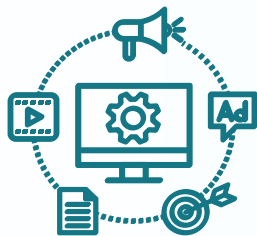


One-size-fits-all approaches fail to engage diverse communities effectively.



Co-develop activities with stakeholders to ensure relevance and practicality in different contexts.

## Knowledge Translation: Stakeholder-Specific Knowledge Products



Standard knowledge products often exclude certain audiences.



Create diverse, accessible formats (e.g., summaries, visuals, videos) to meet stakeholder needs.

# What we learned?

## Co-Developed Targeted Dissemination Strategies



Top-down dissemination misses critical audiences and lacks engagement.



Co-design dissemination strategies with stakeholders using local networks and context-specific channels



# Next Steps

## Smarter Health Care

Research in Dialogue with Politics and Practice

Swiss Network  
for Health Care  
Research



Schweizerische Akademie der Medizinischen Wissenschaften  
Académie Suisse des Sciences Médicales  
Accademia Svizzera delle Scienze Mediche  
Swiss Academy of Medical Sciences

SAMS proposal  
of a federal health law

UNIVERSITY OF LUCERNE'S  
Competence Center for  
Learning Health Systems

#CC\_LHS

# COFFEE BREAK



# SLHS Live: Breaking News in Health Policy & Practice

***BREAKING NEWS***



# Improving Working Conditions in Swiss Nursing Homes

Jason Schneck, University of Applied Sciences and Arts of Southern Switzerland (SUPSI)  
Leonard Roth, Lausanne Centre for Primary Care and Public Health (Unisanté)



# Social Isolation & Strengthening Participation of Older Adults

Kathryn Dawson-Townsend, University of Lucerne







































**Random Acts  
of Connection**

**LONELINESS AWARENESS WEEK**  
10-16 JUNE 2024

**Random Acts  
of Connection**

**LONELINESS AWARENESS WEEK**  
10-16 JUNE 2024

**Random Acts  
of Connection**

**LONELINESS AWARENESS WEEK**  
10-16 JUNE 2024



## Social prescribing – addressing people's needs in a holistic way

GPs and other health care professionals can refer people to a range of local, non-clinical services, supported by a link worker or connector













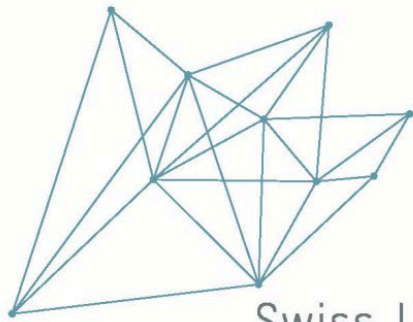




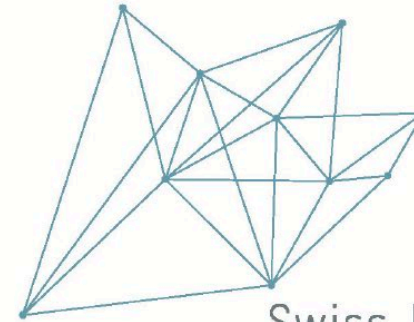


THE PILLARS  
CHILD CARE





Swiss Learning  
Health System



Swiss Learning  
Health System

## Strengthening social participation of socially disadvantaged older people in Switzerland

Kathryn Dawson-Townsend, Sarah Mantwill, Stefan Boes

Policy Brief **#1**

## How do we identify socially isolated and lonely older people in Switzerland?

Yanmei Liu, Sarah Mantwill

Policy Brief **#10**

















# HPV Prevention & Vaccination in Switzerland

Natalie Messerli, University of Lucerne  
Andreas Plate, University of Zurich





# Optimizing Clinical Practice Guideline Adherence in Primary Care

Anna Romanova, University of Lucerne  
Irene Salvi, University of St. Gallen



# Quality Monitoring & Public Reporting in Swiss Healthcare

Maxime Sapin, Carla Walker, Johannes Cordier,  
University of St. Gallen



Institute of Primary Care - University of Zurich

Chair of Health Economic, Policy and Management - University of St. Gallen

Département épidémiologie et systèmes de santé - Unisanté Lausanne

Center for Rehabilitation in Global Health Syst. - University of Lucerne

Dipartimento economia aziendale, sanità e sociale - SUPSI

How can Switzerland improve the way it monitors and reports on the quality of its healthcare system?





# Let's have a look at the Welches-Spital example in Switzerland

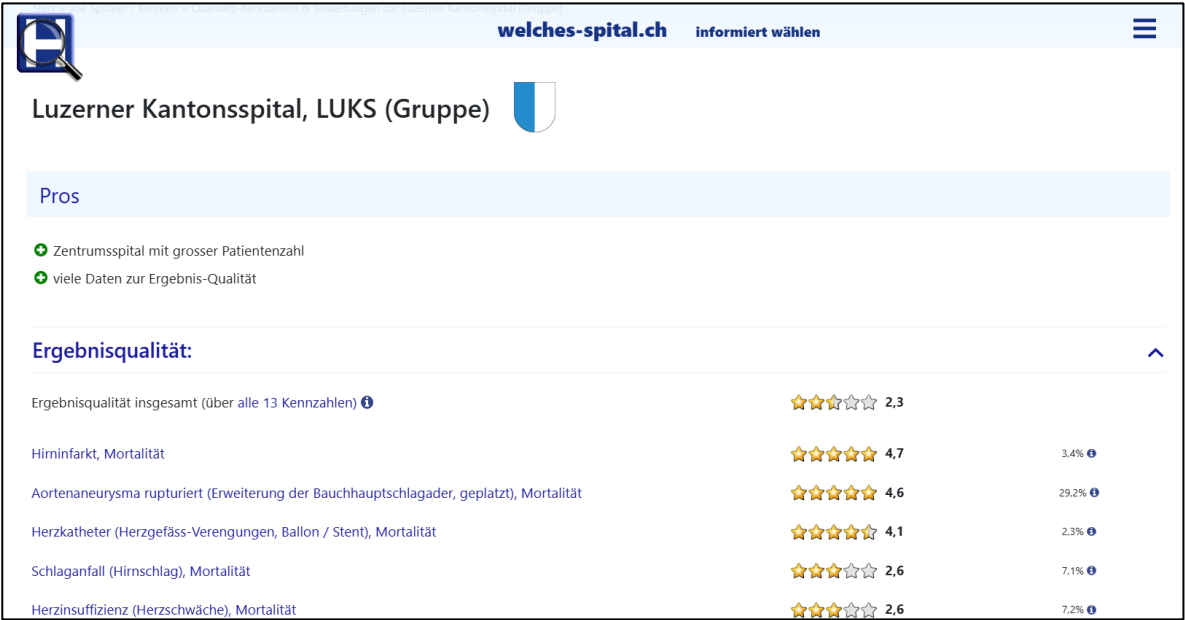
1



2



3



# Let's have a look at the Medicare Care-compare example in the US

1

Welcome

Doctors & clinicians

Hospitals

Nursing homes including rehab services

Home health services

Hospice care

Inpatient rehabilitation facilities

Find hospitals near me

Find and compare information about the quality of care at over 4,000 Medicare-certified hospitals, including over 130 Veterans Administration (VA) medical centers and over 50 military hospitals, across the country.

MY LOCATION

Enter street, ZIP code, city, or state.

Washington, DC

NAME OR TYPE (optional)

Enter the hospital name or a type of hospital.

Search

[Show past search results](#)

Or want to learn more about ambulatory surgical centers (ASC)? [Visit the ASC data on Data.cms.gov](#)

2

MY LOCATION

Enter street, ZIP code, city, or state.

Washington, DC

PROVIDER TYPE

Select a provider type.

Hospitals

NAME OR TYPE (optional)

Enter the hospital name or a type of hospital.

Search

Filter by:

Distance: 25 mi

Overall star rating

Patient survey rating

View All Filters

Showing 1 - 15 of 32 hospitals

Sort by: Closest

1.

0.6 mi

George Washington Univ Hospital

ACUTE CARE HOSPITALS

900 23rd St NW

Washington, DC 20037

(202) 716-4605

Overall star rating

★★★★☆

Patient survey rating

★★★★☆

Compare

Potomac

Beltsda

Silver Spring

Takoma Park

College Park

Chillum

East R

Rock Creek Park

Langley

McLean

Tysons

Idylwood

Washington

Howard University

3

Choose a category to see how this hospital scores on quality topics:

Timely & effective care

Complications & deaths

Unplanned hospital visits

Maternal health

Patient-reported outcomes

Psychiatric unit services

Payment & value of care

Back to

4

Complications

This section shows serious complications that patients experienced during a hospital stay or after having certain inpatient surgical procedures. These complications can often be prevented if hospitals follow procedures based on...  
[Read more](#)

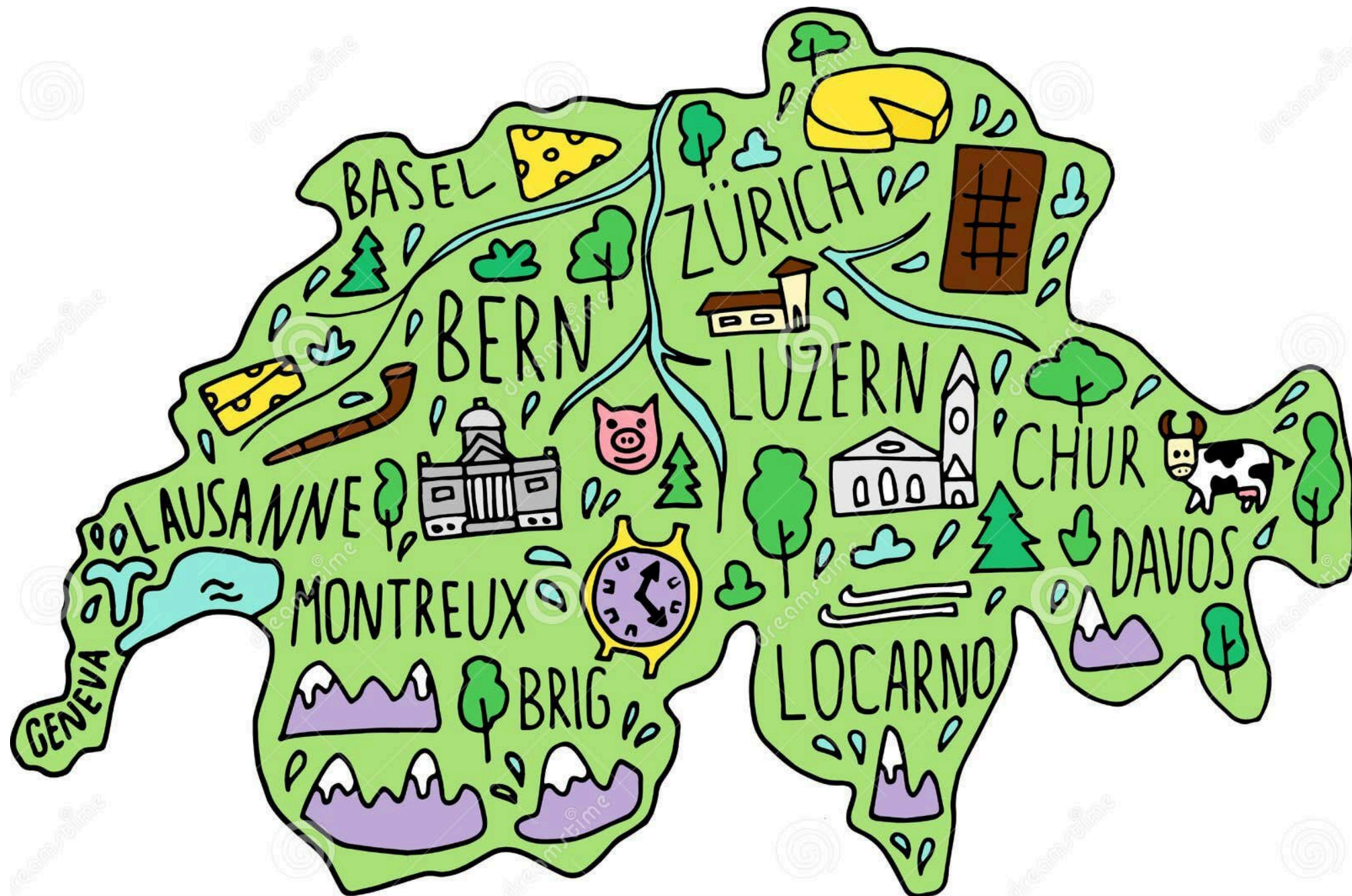
Rate of complications for hip/knee replacement patients

3.2%

No different than the national rate

National result: 3.5%

Number of included patients: 56









# What the public wants doesn't align with what expert want



# Thank you!



University of St.Gallen

School of Medicine

University of St.Gallen  
School of Medicine  
St. Jakob-Strasse 21  
9000 St.Gallen

[med.unisg.ch](http://med.unisg.ch)



# **SLHS Live: Breaking News in Health Policy & Practice**



SLHS WEBSITE



# Smarter Health Care

Forschung im Dialog mit Politik und Praxis



## Launch: Network Smarter Health Care

SLHS Final Event – 09.05.2025

Prof. tit. Dr. Stéfanie Monod, Département épidémiologie et systèmes de santé, unisanté

Prof. Dr. Milo Puhan, Epidemiology, Biostatistics and Prevention Institute, University of Zurich

# Challenges in Health Care

- Disconnected and fragmented care systems
- Ongoing talent drain from the healthcare workforce
- Few opportunities for exchanges among stakeholders outside of specific businesses

→ Health Care must become smarter!

# Vision of a "Smarter" Health Care

A learning, connected, and person-centered health care system that:

- respects individual life contexts,
- fosters interprofessional and transdisciplinary collaboration, and
- is supported by appropriate legal, financial, and data-driven frameworks.

# Previous Initiatives



- Strengthening transdisciplinary healthcare research
- Promotion of early-career professionals

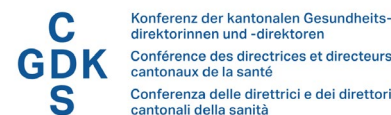
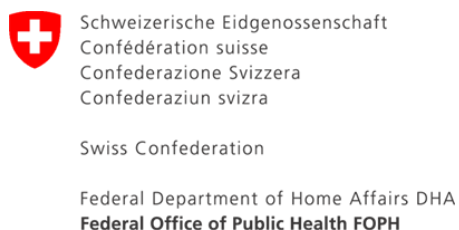
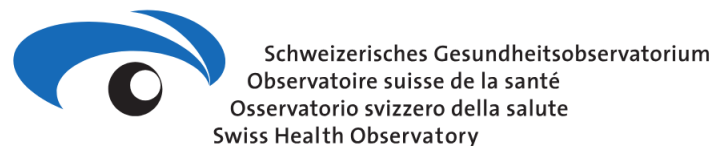


- Strengthening structures for continuous learning
- Promotion of early-career professionals at the science-policy interface





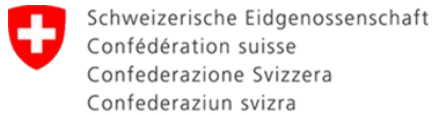
# Organisations behind Smarter Health Care



# Previous Activities



**Innosuisse - Schweizerische Agentur für Innovationsförderung**



Swiss Confederation

Federal Department of Home Affairs DHA  
**Federal Office of Public Health FOPH**

PROMOTING  
RESEARCH

Research  
resources

International  
cooperation

STRENGTHENING  
the HSR-COMMUNITY

Teaching  
& training

Coordination



Dialogue on  
research & practice

KNOWLEDGE TRANSFER



A red speech bubble with a white outline and a small tail pointing towards the bottom right.

New!

# Smarter Health Care

Forschung im Dialog mit Politik und Praxis

# Mission of Smarter Health Care

The Smarter Health Care network **brings together** stakeholders from research, practice, and policy to

- **foster dialogue**, co-develop solutions for better health care delivery, and
- drive the **implementation of evidence-based**, integrated care models.

# 3 Aims of Smarter Health Care

## Make health services research accessible

- Lower the barriers to engaging with health services research for stakeholders from practice, academia, and policy.

## Empower young talents

- Enable emerging professionals to actively participate in interprofessional and cross-sector dialogue.

## Foster co-creation

- Create spaces and formats that support the joint development of practical and sustainable solutions for health care delivery.



# Steering Group



**Andreas Balthasar**

Mitglied Steuergruppe  
Universität Luzern, SLHS



**Herbert Brunold**

Mitglied Steuergruppe  
BAG Evaluation &  
Forschung



**Luca Crivelli**

Mitglied Steuergruppe  
SSPH+ und SUPSI



**Thomas Geiger**

Mitglied Steuergruppe  
SPHN



**Rolf Heusser**

Verantwortlicher Lehre &  
Training  
SSPH+



**Sarah Mantwill**

Verantwortliche Dialog  
Universität Luzern, SLHS /  
SSPH+



**Stéfanie Monod**

Mitglied der Steuergruppe  
Unisanté



**Manuela Oetterli**

Koordination  
SSPH+



**Milo Puhan**

Vorsitz Steuergruppe  
SSPH+ / Universität  
Zürich



**Marcel Widmer**

Mitglied Steuergruppe  
Obsan



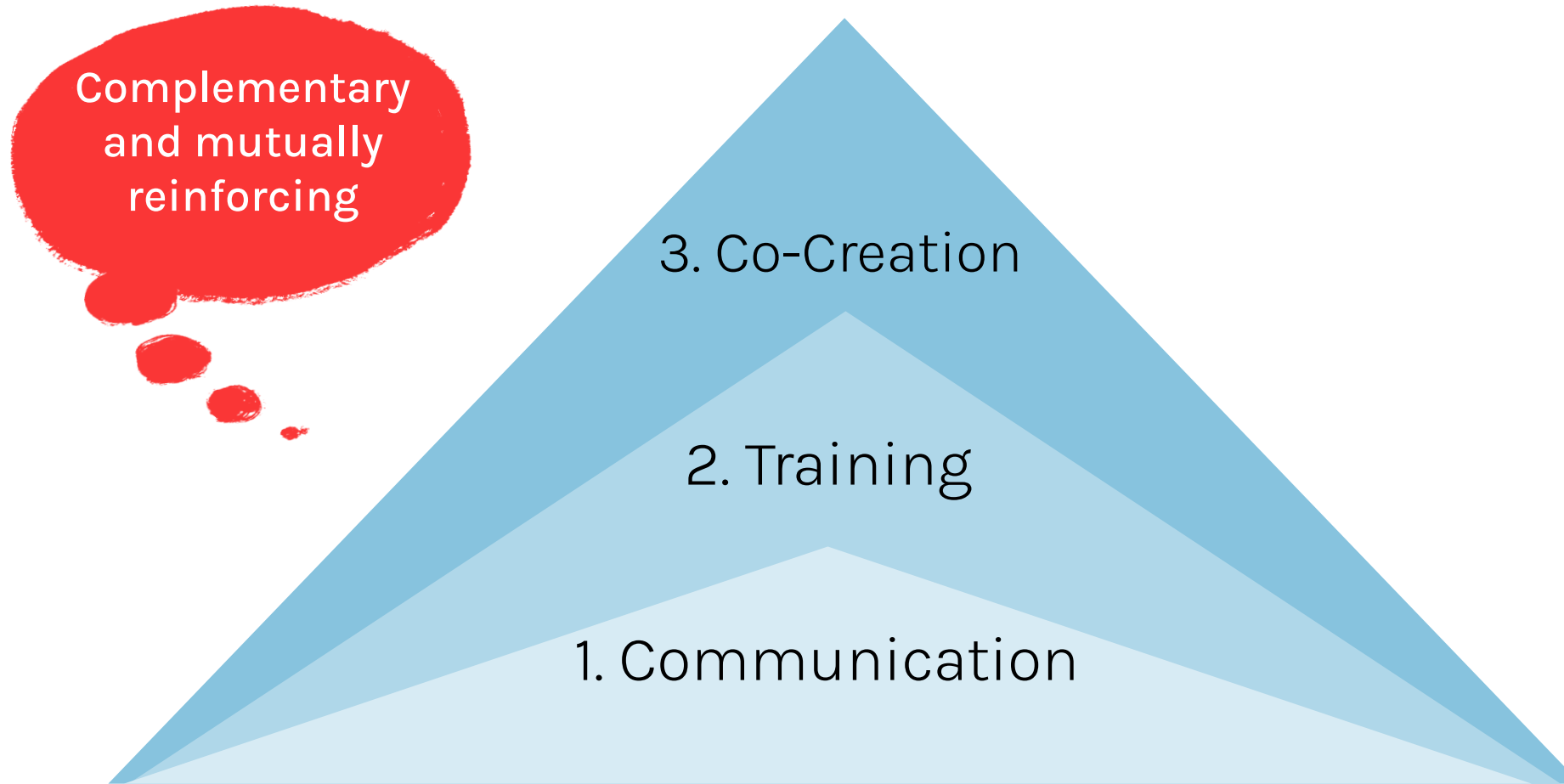
**Marcel Zwahlen**

Mitglied Steuergruppe  
Universität Bern

**Smarter  
Health Care**

Forschung im Dialog mit Politik und Praxis

# 3 Key Areas of Action



# 1. Communication

Platform [www.smarterhealthcare.ch](http://www.smarterhealthcare.ch), LinkedIn and Newsletter

Gateway to health services research:

- Promotion of and information on **research projects**, funding opportunities (coordination with the SSPH+ engine)
- Promotion of and information on **dialog events**, opportunities for launching a dialog
- Promotion of public **courses** and courses in the EHL program

Contact options:

- Search for experts
- Membership

Smarter Health Care





## 2. Training

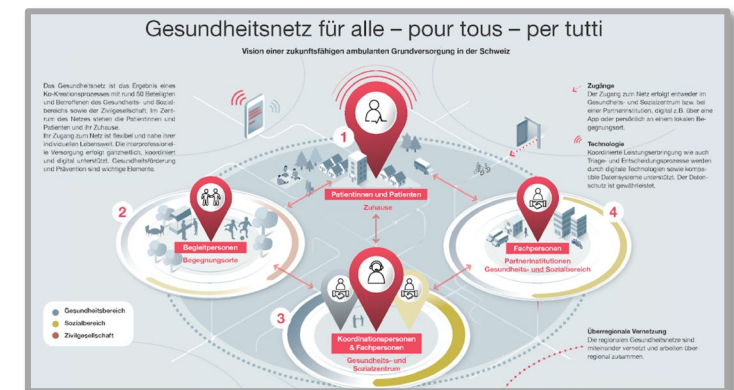


Emerging Health Leaders Programm (EHL) 2026-2029:

- **Objective:** Establish and empower a community of emerging health leaders
- **Target Group:** Early-career talents from research, practice, and policy
- **Core Components:** Skills training, practical formats, community building, coaching
- **Current Status:** Ongoing open courses – see [www.smarterhealthcare.ch](http://www.smarterhealthcare.ch)
- **Budget:** CHF 1.34 million over 5 years – Sponsorship opportunities available

# 3. Co-Creation

- Free **webinars** on current topics (next webinar: 25th June on the National Health Act)
- Design and implementation of **dialogue events** (for developing recommendations, as standalone research projects, etc.)
- Promotion of **co-creative, collaborative research** projects
- Products: Action plans, policy playbooks, strategic roadmaps, etc.



# Benefits of a Membership



## For Individuals (Free):

- **Stay informed:** Visit [smarterhealthcare.ch](https://smarterhealthcare.ch), subscribe to the newsletter, follow on LinkedIn
- **Connect:** Join webinars, conferences, and engage with actors across sectors
- **Make research accessible:** Explore project profiles, database, and advisory services
- **Get involved:** Participate in transdisciplinary dialogue formats, contribute your own ideas
- **Support emerging talent:** Continuing education for young professionals from all sectors

### Register now:

[smarterhealthcare.ch/kontakt](https://smarterhealthcare.ch/kontakt)  
[info@smarterhealthcare.ch](mailto:info@smarterhealthcare.ch)





# Benefits of a Membership



For Institutions (CHF 5,000 / year):

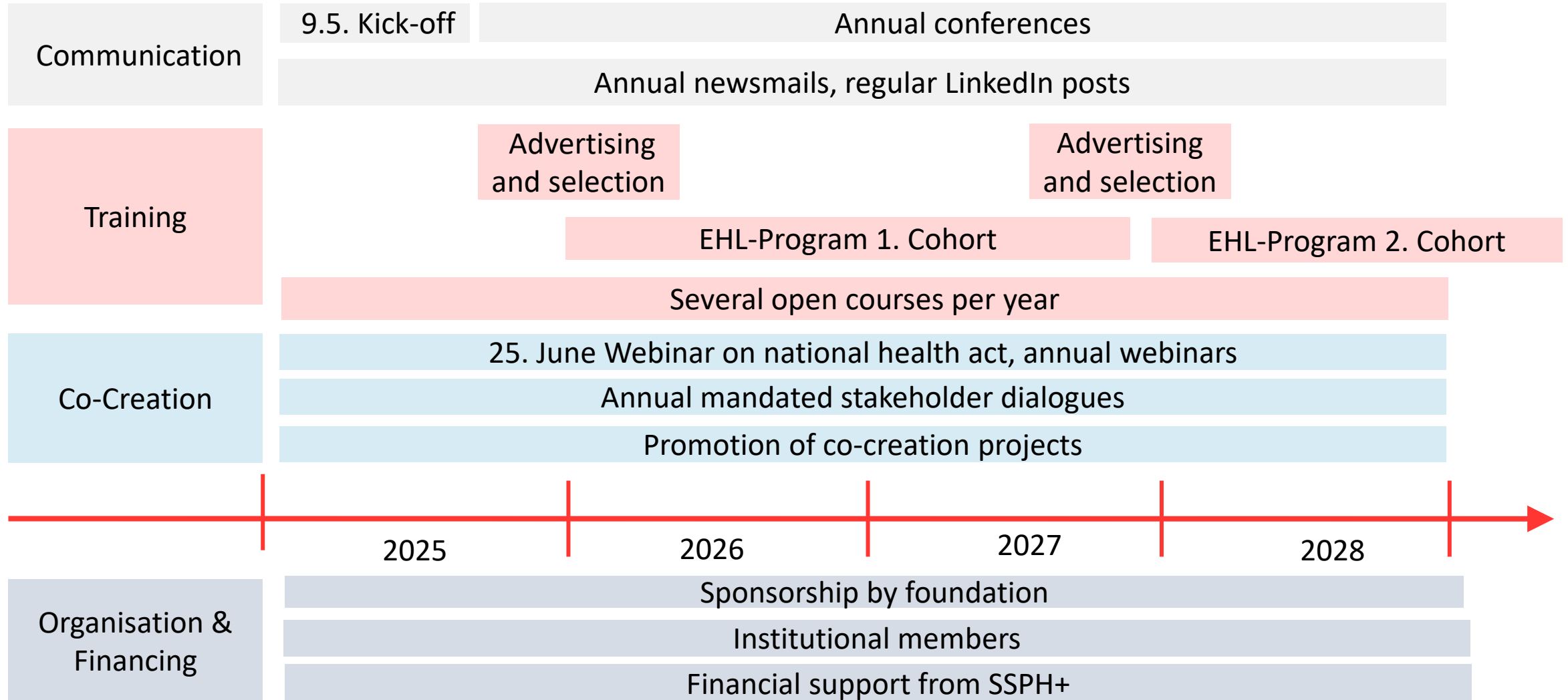
- Access to experts
- Contribute to opinion-shaping processes
- **Visibility:** Logo integration in materials
- **Priority access** to dialogue formats, events, and the EHL programme

**Register now:**

[smarterhealthcare.ch/kontakt](https://smarterhealthcare.ch/kontakt)  
[info@smarterhealthcare.ch](mailto:info@smarterhealthcare.ch)



# Timeline & Next Steps



# Join us!

**Now!**

**Register now:**

[smarterhealthcare.ch/kontakt](https://smarterhealthcare.ch/kontakt)

[info@smarterhealthcare.ch](mailto:info@smarterhealthcare.ch)



Contact for inquiries and suggestions:

Sarah Mantwill, Responsible Dialogue SSPH+, Research Manager SLHS - E-Mail: [info@smarterhealthcare.ch](mailto:info@smarterhealthcare.ch)



# Lunch Break

Access [Insights Briefings](#) and choose your group to join a Stakeholder Dialogue after lunch

**13:20** we meet in the Pool – follow your group's facilitators!



#1 Social Innovation



#2 GPs-Pharmacists Collaboration



#3 Data Silos to Quality Signals



#4 Eliminating HPV-related cancers

# Stakeholder Dialogues: Live



#1 Social Innovation

**Room: Backstage**



#2 GPs-Pharmacists Collaboration

**Room: Gartensicht**



#3 Data Silos to Quality Signals

**Room: Pool**



#4 Eliminating HPV-related cancers

**Room: Aquarium**

# Stakeholder Dialogues Live: Presentations and Discussion





# Dialogue 1: Fostering Social Innovation in Health and Social care in Switzerland

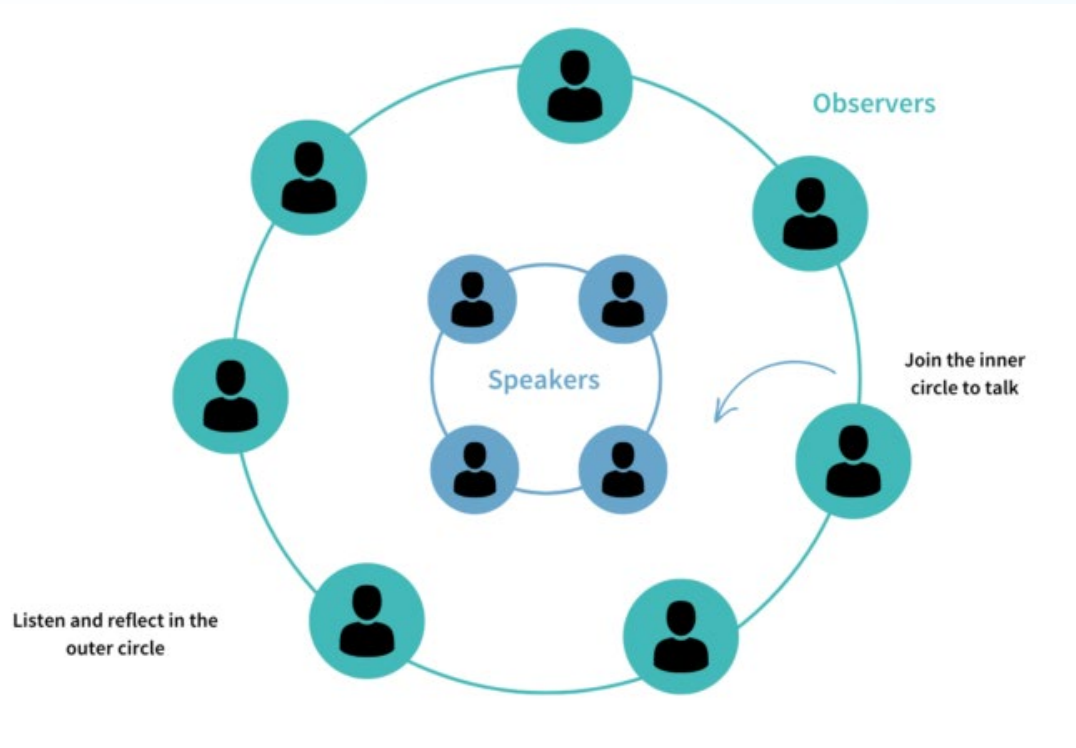
**Method: Future Newspapers**



FLIPCHART PICTURE

# Dialogue 2: Building Stronger GP–Pharmacist Collaboration

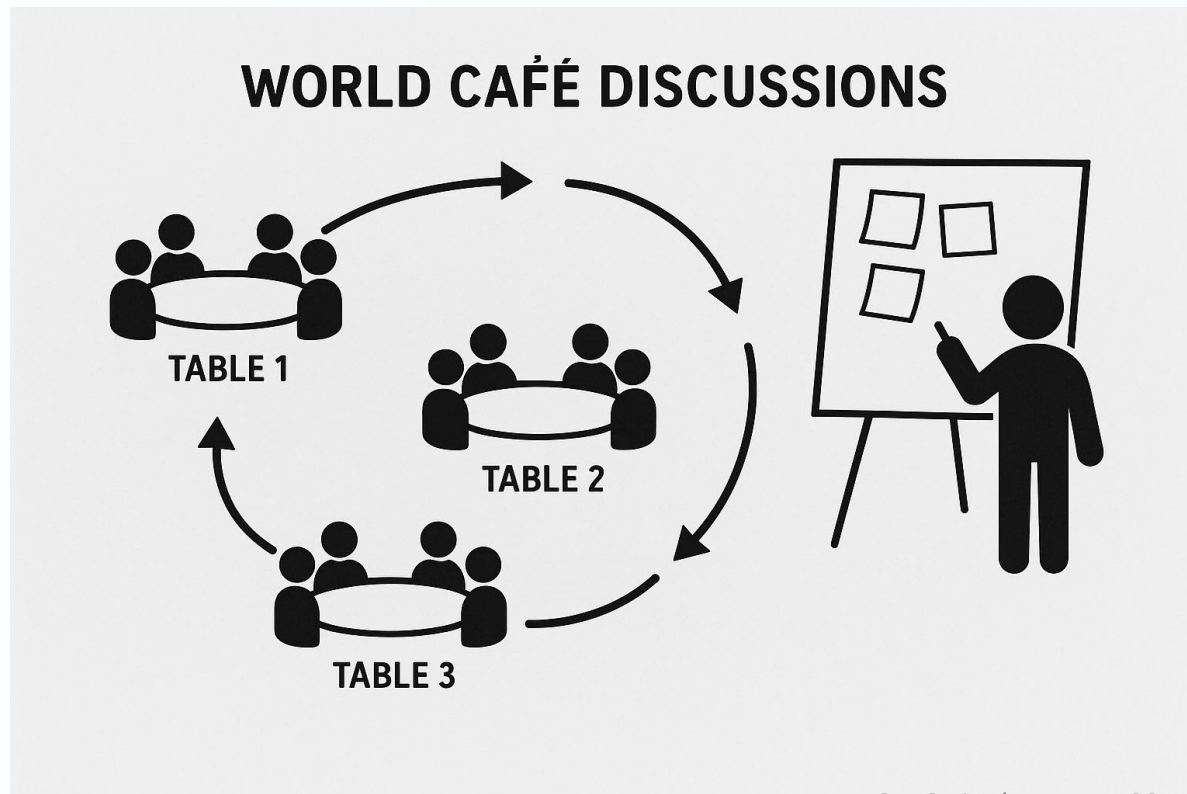
## Method: Fishbowl



FLIPCHART PICTURE

# Dialogue 3: From Data Silos to Quality Signals

Method: World Café

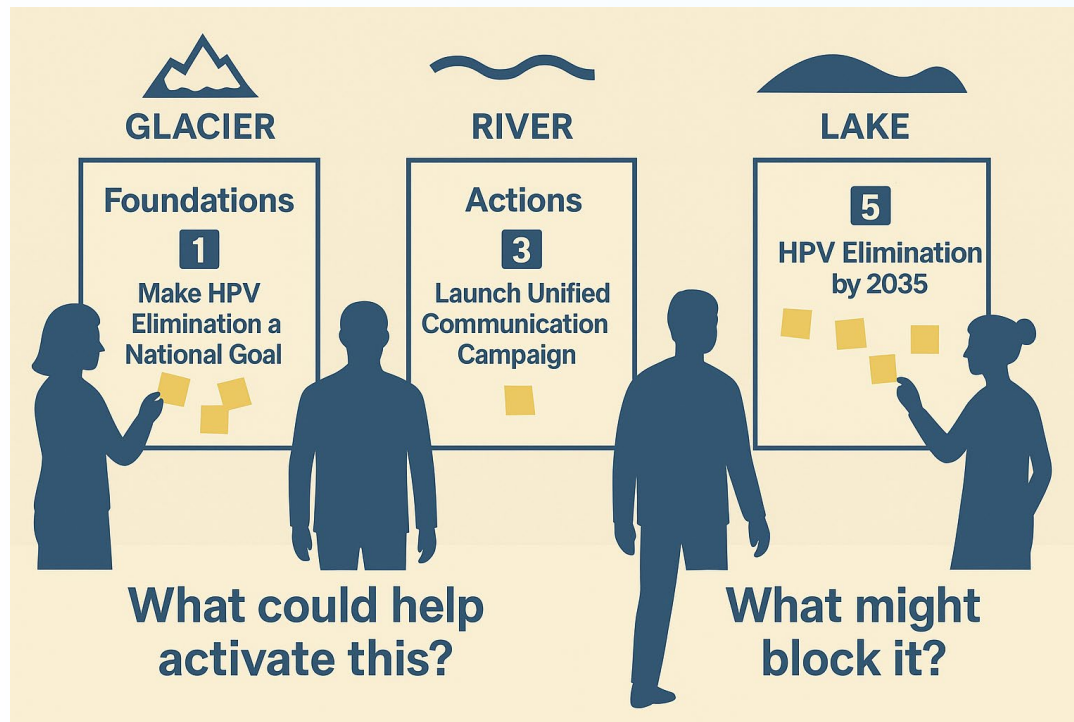


FLIPCHART PICTURE



# Dialogue 4: Towards the Elimination of HPV-Related Cancers in Switzerland

## Method: Action Cards



FLIPCHART PICTURE

# Health2040:

## Shaping the Future of Outpatient Primary Healthcare in Switzerland

---

**SLHS's Final Event, Lucerne 9th of May 2025**

**Anna Romanova**, Swiss Learning Health System, Faculty of Health Sciences and Medicine, University of Lucerne  
**Zora Föhn**, Interface Politikstudien Forschung Beratung AG



**I N T E R F A C E**

Schafft Wissen | Entre science et pratique

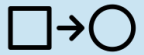
**UNIVERSITÄT  
LUZERN**



# Outpatient Primary Healthcare ●



**Facing diverse and complex challenges** (e.g. rise in chronic diseases, technological transformation, increasing cost pressures, and a shortage of healthcare professionals)



**Urgent need to transform** current healthcare structures, in view of these challenges



**Integrated healthcare as an important basis** for this transformation (Patient-centered approach, Structured interprofessional collaboration, Cross-sectoral cooperation, Integration over fragmentation)



**Various factors are favoring innovation** in outpatient primary healthcare (e.g. reduction in service provision, legal and political pressure, and research advancements)

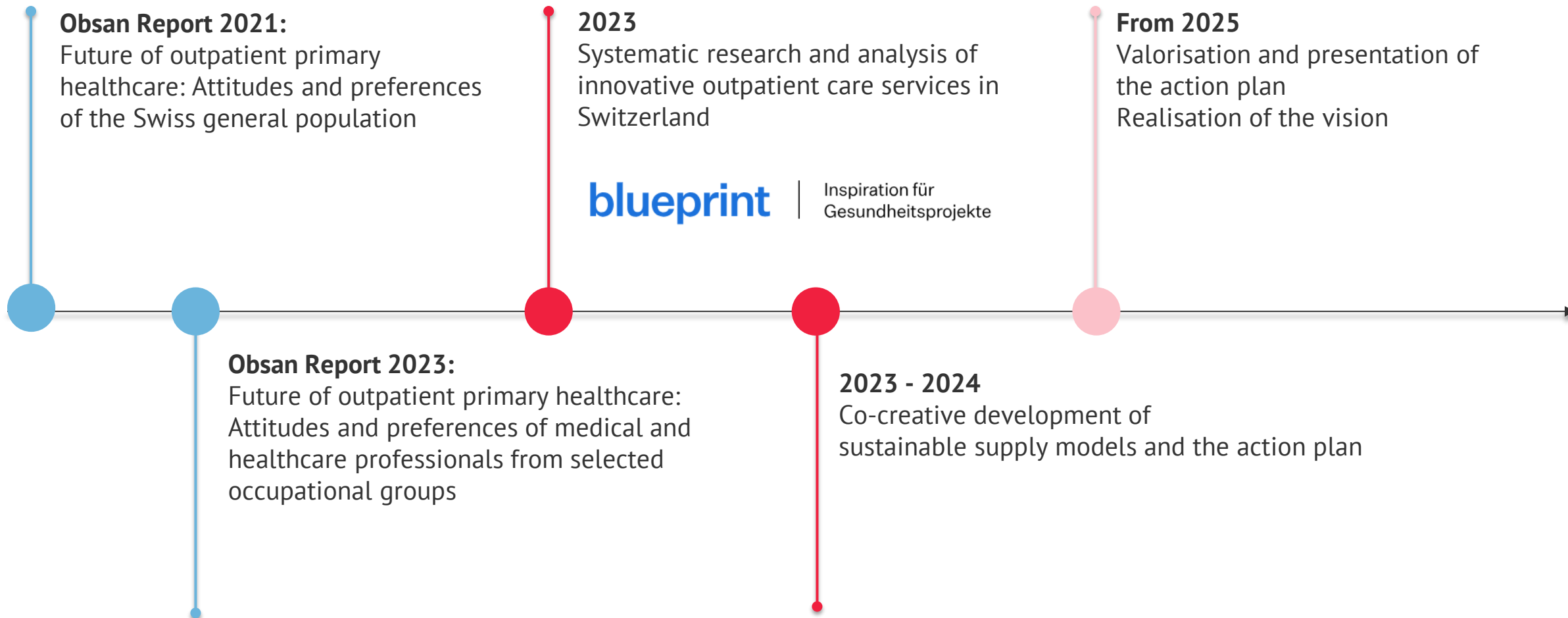


# Research aim of Health2040



How should future-proof outpatient healthcare models in Switzerland be designed to meet the **preferences of the population**, **remain attractive for health professionals**, gain **political acceptance**, and **contribute to addressing key challenges**?

# Health2040



# Obsan Report 2021



Representative survey of **5,353 people from the general Swiss population**



**Analysis of preferences** for future models of outpatient primary healthcare in Switzerland



Focus on **different approaches to care**: General practitioners, pharmacists, carers, apps




Focus on **preferred caregivers and coordination methods** between healthcare professionals







# Model-specific preferences of the Swiss general population



The Swiss population places great importance on **continuity of care**, as well as **being involved in decision-making** about necessary (follow-up) treatments and **healthcare providers**.



**Opening hours** or the **mode of contact** (e.g. by phone or app) are comparatively less relevant.



However, a closer look reveals population groups with **distinct preference structures**.

# Model-specific preferences of the Swiss general population



## The GP appreciator

(older, worse overall health status)

- Strong preference for **personal continuity** of care
- Want the **GP** as their central contact person
- **Willing to pay higher premiums** for a system that meets their needs



## The money saver

(younger, higher education level)

- Emphasis **on low premiums**
- Value **shared decision-making**
- **Less importance** on **personal continuity**
- Less importance on **educational background** of health professional



## The ambivalent chooser

(higher share of migration background, lower satisfaction with status quo)

- Want **personal continuity** and **choose coordinator**
- **Less importance** on **educational background** of health professional
- Value **extended access** beyond office hours

# Obsan Report 2023



Online survey with **4,063 medical and healthcare professionals**



**Analysis of preferences** for future models of outpatient primary healthcare



Focus on **health promotion, prevention and interprofessional collaboration**




**Preferences for the organisation of responsibilities** (e.g. initial contact, treatment plans, assumption and transfer of responsibility)





# Model-specific preferences of medical and healthcare professionals



All professional groups favour a model in which a specialist **from their own professional group makes the initial contact and** takes **responsibility for the treatment plan.**



For the future, all professional groups favour a model in which **decisions are made jointly.**



With regard to the form of organisation of a care model, respondents prefer both a **healthcare network** and a **healthcare centre** to an individual practice.

# Health2040:

## Co-creation of the Health2040 Action Plan

---

SLHS's Final Event, Lucerne 9th of May 2025



**I N T E R F A C E**

Schafft Wissen | Entre science et pratique

UNIVERSITÄT  
LUZERN



# Co-creation objectives



To bring together relevant stakeholders in  
a co-creation process to develop:

1

A **collaborative vision** for the future of primary health care in Switzerland.

2

An **action plan** for the implementation of the co-created vision.

# Participatory workshops

## ● Workshop (April 2024): I: The Vision

- Crafted primary care models for specific patient groups: the youth, the elderly, working adults, families, and individuals with a migration background.
- Explored how these patient-specific models could be integrated into a unified model.




## ● Workshop II (June 2024): The Action

- Defined key conditions and actions for the implementation of the co-created model.
- Identified necessary adjustments in the financial, legal, technological, and cultural-organizational areas.





# Health2040: Stakeholders



**More than 50  
workshop participants**

- Federal office of public health
- Representatives of cantons
- Representatives of communities
- Representative of Spitex
- Representatives of medical doctors (organization and practitioners)
- Representative of Physioswiss
- Representatives of patients
- Representatives of pharmaceutical industry
- Representative of Pro Senectute Schweiz
- Representatives of universities and universities of applied sciences
- Representative of Krebsliga
- Representatives of psychiatry
- Representative of Artiset
- Representative of IG Swiss ANP
- Representatives of health insurance
- Representatives of prevention, child and youth work department
- Representative of organisations for neighbourhood support

# Results



**A care model** “Gesundheitsnetz für alle – pour tous – per tutti”  
(Health Network for All)



**An action plan** that provides strategic directions for implementing the care model.

# Gesundheitsnetz für alle – pour tous – per tutti (Health Network for All)



1

Patients & their homes are at the center of the Health Network

2

Low-threshold access and guidance at local community spaces

3

Coordinated services in a central Health & Social Hub

4

Collaboration and coordination with regional partner institutions and services



# The Action Plan

Three central areas of action to realize the vision of the “Health Network für alle – pour tous – per tutti” by 2040:

1

**Network-Based Care:** Collaboration across healthcare, social sectors, and civil society for flexible, person-centered care.

2

**Coordination and Navigation:** Supported by a shared data platform, effective coordination ensures that services within the health network are aligned and that patients are guided through the system.

3

**Low-Threshold and Flexible Access:** Low-threshold access with a multilingual app and locally anchored community spaces provide people with direct support within their living environment.



# Health2040: Discussion



**Saskia De Gani**  
Careum  
Foundation



**Christian Schirlo**  
University of  
Lucerne



**Cornelia Hediger**  
Forum Psychische  
Gesundheit Jugend



**Martin Villiger**  
KISS Foundation



**Lukas Zemp**  
Selbsthilfe Schweiz

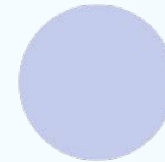


# Closing Reflections

**Sarah Mantwill, University of Lucerne**



# Closing Reflection



**Smarter  
Health Care**  
Forschung im Dialog mit Politik und Praxis



UNIVERSITY OF LUCERNE'S  
Competence Center for  
Learning Health Systems #CC\_LHS

**SLHS PhD Students and Alumnis** – for their dedication, hard work, and contributions.

**SLHS Governing Board** – for their leadership, vision, and continuous guidance.

**SLHS Advisory Board** – for their strategic insights and support.

**Stakeholders and Collaborators** – for your trust, commitment, and partnership.

# Thank you!



**State Secretariat for Education, Research and Innovation (SERI)** – for making the SLHS possible.

**Additional Funders** – whose contributions were essential to the success of SLHS.

**Thank you!**

# Closing Reflection

## Smarter Health Care

Forschung im Dialog mit Politik und Praxis

Now!

Register now:

[smarterhealthcare.ch/kontakt](https://smarterhealthcare.ch/kontakt)

[info@smarterhealthcare.ch](mailto:info@smarterhealthcare.ch)



## Closing Reflection

Now!

# Smarter Health Care

Forschung im Dialog mit Politik und Praxis



# Apero time!

